

A

W

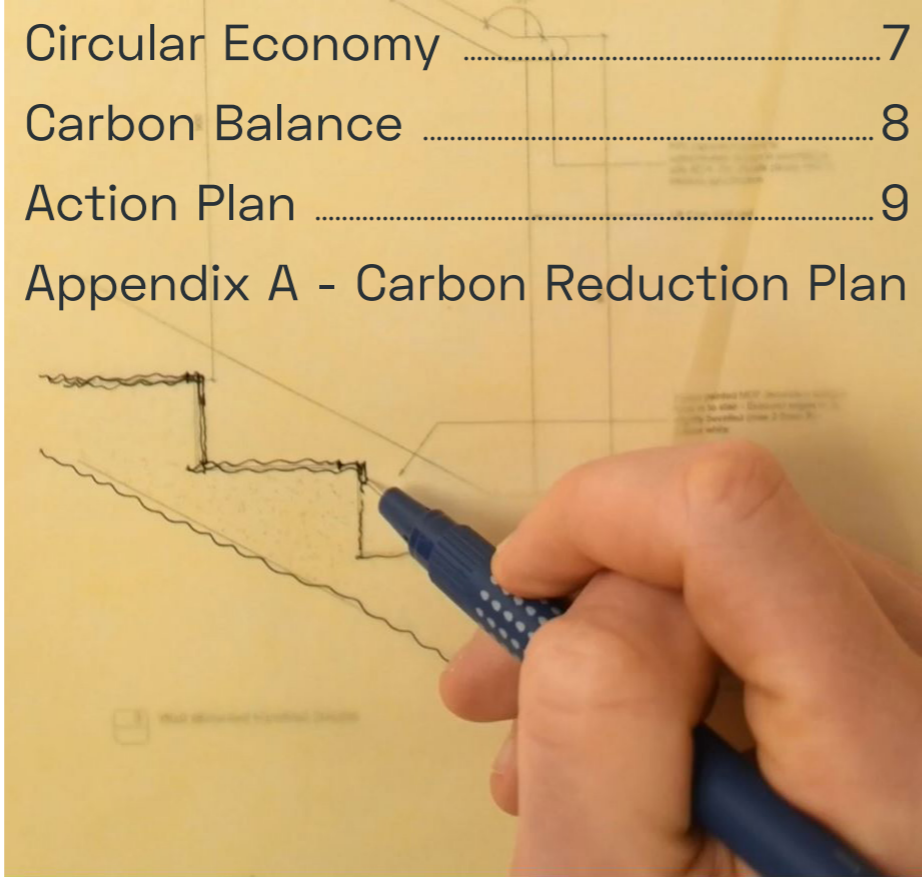
Carbon Footprint Report
2023-24

W



Contents

Introduction.....	1
Executive Summary.....	2
About Us	4
Carbon Footprint	6
Circular Economy	7
Carbon Balance	8
Action Plan	9
Appendix A - Carbon Reduction Plan	



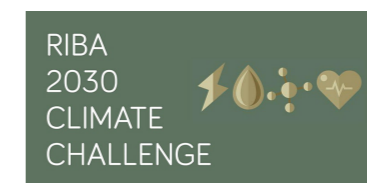
Introduction



“AWW are committed to making a positive impact. Sustainable design is inseparable from good design, and our goal is to create beautiful places that enhance people’s lives and give back to the environment.”

As an architectural practice, the buildings that we design account for the vast majority of our carbon impact, but we must also lead by example in continuing to improve upon our own business carbon footprint and delivering on our design pledge.

The scope of this report is to review AWW’s business carbon footprint and provide recommendations for further actions.



AWW have committed to a science based target carbon reduction through the SME Climate Hub, and are signatories of RIBA 2030 Challenge & Architects Declare

Executive Summary

Commitment Practice + Projects

AWW has been forward-thinking and proactive with regards to environmental and social impact management, and has an ISO 14001 environmental system in place to audit business operations. This document is the 4th AWW carbon footprint for business energy use, and is in place to help improve upon our existing systems and enact on our SME Climate Hub Pledge.

Although there is no legal responsibility to report, we see that by robustly monitoring the business against a science-based target, and by reporting against this, we can take the next critical step to becoming net zero.

We also recognise potential business advantages:

- Risk Management
- Reputation
- Resilience

To acknowledge our commitment, and to gain a better understanding into how we monitor, reduce and report our carbon footprint, AWW has joined the SME Climate Hub and made the SME Climate Commitment.

This is recognised by the United Nations Race to Zero campaign, and thus aligns with the relevant United Nations Sustainable Development Goals (UNSDG).

As an architectural practice, the buildings that we design account for an estimated 1000 times that of our business carbon Impact, and, although outside the scope of this document, our 2025 'net zero ready' pledge extends to our projects, and also aligns with the UNSDG through the RIBA 2030 Challenge and LETI.

We recognise the importance of accounting for our business GHG because our people define the outcome of the projects that we design and deliver, and they do this within our business framework; therefore the way we conduct our business and the environment we make for projects to develop, is of key importance.



“Recognising that climate change poses a threat to the economy, nature and society-at-large, AWW commits to take action immediately in order to (as a minimum):

1. Halve our greenhouse gas emissions before 2025
2. Achieve net zero emissions before 2030
3. Disclose our progress on a yearly basis

In doing so, we are proud to be recognised by the United Nations Race to Zero campaign, and join governments, businesses, cities, regions, and universities around the world with the same mission.”

A handwritten signature in white ink, appearing to read 'Tim Forster'.

Tim Forster
Sustainability Director, AWW
AWW Pledge 2021 SME Climate Hub.

Executive Summary

AWW Carbon Footprint

AWW's calculated carbon footprint for 2023/2024 financial year, including business premises energy use, and business travel, was 38.57 tonnes CO2e, or approximately 0.58 tonnes CO2e / person.

Data 2023-2024

This report relates to our 2 offices, London and Bristol, over our financial reporting period between 05.04.23 - 04.04.24

The data available is limited to all of our Scope 1 and 2 business emissions, and our Scope 3 business travel.

We do collect additional data for our environmental costing, including waste collection and supplies costs, however we don't yet have adequate data to report these Scope 3 emissions accurately.

The 38.57 tonnes CO2e includes the flights for the office international study trip - the first time we've made this trip since the pandemic.

Home working data has been collected this year, however these Scope 3 emissions are not included in the total as there is not enough accuracy around this, including the reduction in office energy use and commuting.

Carbon Reduction 2023-2024

Our target is to halve our 2020-21 greenhouse gas emissions by 2025, and pledge to offset at least 100% of our carbon balance annually.

20-21 emissions were 65.15 tonnes CO2e, so in 24-25 we have targeted 32.58 CO2e tonnes. This year, 23-24, we are on trajectory, achieving a 41% reduction to date.

This includes additional (Scope 3 business travel) emissions that were excluded in the 20-21 report, so like-for like when comparing Scope 1 and 2 emissions from 20-21 to 23-24 we have achieved a 58% reduction.

38.57

Annual Emissions AWW 2021-22 CO2e tonnes - total (limited scope)

390

Annual Emissions Typical Large project CO2e tonnes (data from AWW 2021)

0.58

Annual Emissions AWW 2020-21 CO2e tonnes - per employee

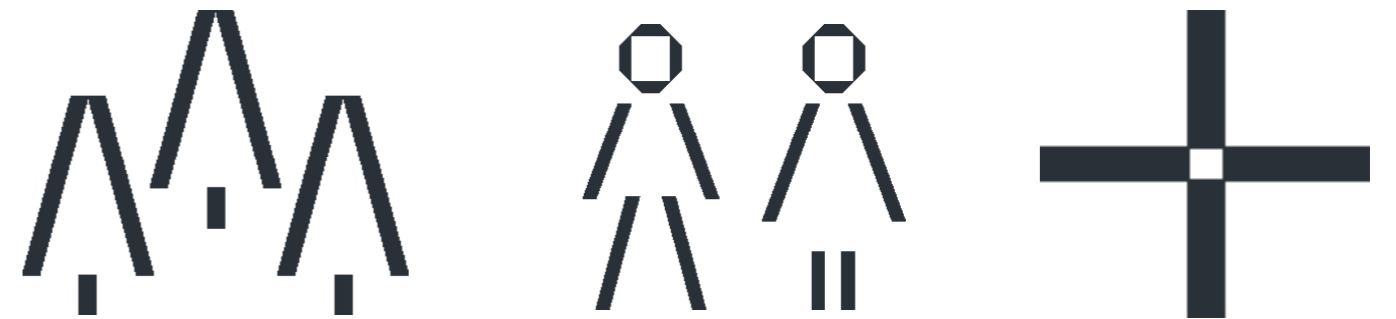
9450

Typical Embodied Carbon Large project CO2e tonnes (2020 benchmark)

0.5%

Annual Emissions of AWW business operations 2022-23 as a %, compared with the embodied carbon of 1 typical large (13,500m2) project completed in 2020. This highlights why building designers and stakeholders need to use their influence and expertise to mitigate the carbon impact of the built environment.

There are 3 strands to the TEMWA carbon offsetting scheme



1. Community-led tree planting
2. Supporting farmers and households to plant fruit producing trees
3. Working with traditional governance structures to protect existing forests

58%

Reduction in AWW Scope 1 and 2 emissions from 20/21. All of the remaining AWW Scope 1 and 2 emissions have been offset through the TEMWA scheme.

Travel in 2023-24 compared to 2019-20 pre-pandemic figures:

↓89%

Pool car CO2e (89% reduction)

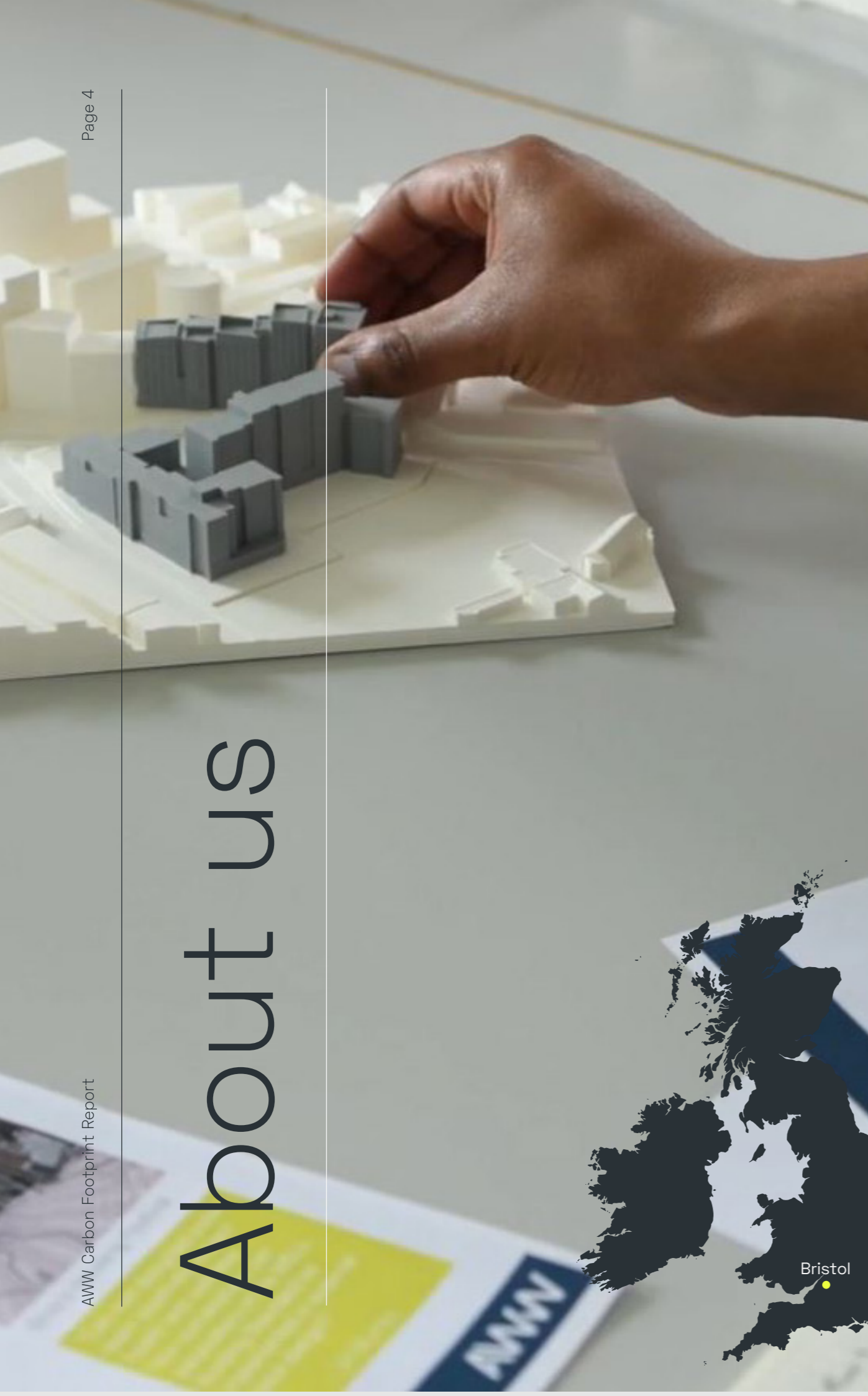
↓9%

Taxi travel £ (9% reduction)

↓76%

Train travel Journeys (76% reduction)

About us



AWW Premises & Staff

We have offices in London and Bristol, with a yearly average total staff number of 67, equating to 62 full time equivalent (FTE).

Our offices are similar in that:

- AWW are the tenant - leased short term (5-10 years)
- They use electricity only (no mains gas)
- Rates are paid to the landlord for energy use and water

With a flexible working policy in place a portion of staff time was spent working away from the office. This year we have used the Home Working tab in the GHG calculator to quantify these associated Scope 3 emissions. They are not included yet in our reported figures as commuting and other factors like net reduction in office energy usage are not yet taken into account without more accurate monitoring.

AWW Partners

AWW works with supply chain partners for office and project support. These emissions are not accounted for, but again will need to be understood and brought into the Scope 3 emissions for accuracy in future accounts.

AWW Travel

The majority of our business travel is by train, with the trend showing a year-on-year increase, whilst car use appears to have

leveled out in the years since the pandemic.

The electric pool car purchased January '22 helped to reduce carbon emissions. This year we replaced the diesel pool car with a EV-Pertrrol hybrid for longer journeys and this had had a positive impact in reducing our total emissions by 2.7tCo2e.

Cycling is rarely used for business travel and although incentives have been in place historically, and cycling to work is popular, it is rarely practical for meetings or site visits.

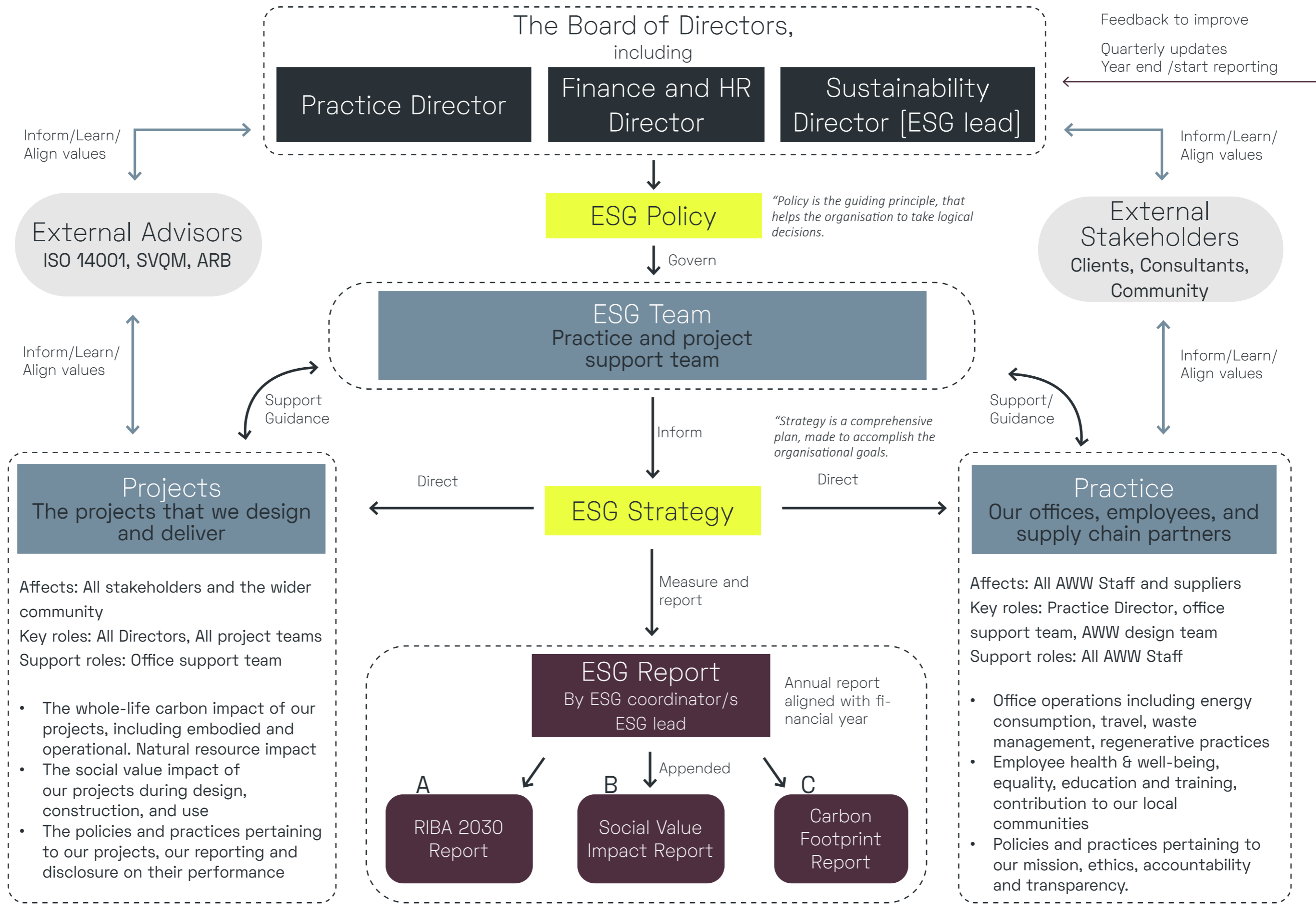
The significant difference this year was the company's international study trip. The destination and the decision to fly were considered in the round with the wider practice value of the trip. With an alternative means of transport (train) not viable in this instance, offsetting was considered an appropriate action.

AWW Environmental Social and Governance

Our business energy use is one element of our environmental and social impact. The commitment table below, and the diagram overleaf show the wider context of our practice governance and decisions making when it comes to our carbon emissions and our social responsibilities.

AWW is the first architectural practice to have achieved the Social Value Quality Mark (SVQM). AWW achieved the Silver award this year and will target Gold in 2025.

AWW Commitment	Covers Practice	Covers Projects	Metrics
Architects Declare	✓	✓	
RIBA 2030 Challenge (Alignment with LETI guidance & relevant UNSDG)		✓	✓
UN Race to Net Zero (Via SME Climate Hub & relevant UNSDG)	✓		✓
Social Value Quality Mark	✓	✓	✓



Carbon Footprint

Scope	Category	Item	Unit	Total All Offices	Carbon Factor (kg CO2e)	Carbon Footprint (CO2e tonnes)	Approx % weighting / not measured
Scope 1	Utilities	AWW office - Gas	KWh	0	0.18	0	0%
Scope 1		Personal car	Litre	1,944.93	2.35	4.571	14.44%
Scope 1	Project related travel	Pool car (Hybird-EV/Petrol)	Mile	5,770	0.04152	0.240	0.76%
Scope 2		Pool car (EV)	Mile	1,860	0.08116	0.151	0.48%
Scope 2	Utilities	AWW office - Electric	KWh	80,748	0.207	16.721	52.83%
Scope 3		AWW office - Water	m ³	-	-	-	not measured
Scope 3	Home Working	Home Working	FTE	22,288	0.33378	7.439	not included
Scope 3	Supply chain offices	Other Office - Utilities	KWh	-	-	-	not measured
Scope 3	Project related travel	Taxi	km	3,361	0.2081	0.699	2.21%
Scope 3		Train	km	107,045	0.0355	3.796	11.99%
Scope 3		Flights	km	0	0.1859	0	0%
Scope 3	Study Trip	Flights	km	37200	0.1859	6.916	incl. below total
Scope 3	Staff commuting	All forms	km	-	varies	-	not measured
Scope 3	Supplies	Deliveries	km	-	-	-	not measured
Scope 3	Well - Tank (WTT)	Electricity (generation)	KWh	81,969	0.0459	3.762	11.71%
Scope 3	Well - Tank (WTT)	Electricity (T&D)	KWh	81,969	0.00397	0.325	1.01%
Scope 3	Transmission & Dist Losses	Electricity	KWh	81,969	0.01792	1.469	4.57%
Scope 3	Waste	Collection	£	-	-	-	not measured
Total tonnes CO2e						31.651	100%
Total including International study trip						38.567	+21.85%

AWW Carbon Footprint

AWW carbon footprint has been calculated using the collected annual data and the Greenhouse gas reporting: conversion factors 2023 (<https://www.gov.uk/government/publications/greenhouse-gas-reporting-conversion-factors-2023>)

There are Scope 3 categories for which we don't report, and we are reviewing how we report on those emissions - e.g we now include Scope 3 transport, and we would like to also allow for home working.

AWW Scope 1, 2,3

Our Scope 1 (direct) emissions are limited to our non-EV vehicles as we have no other fuel combustion appliances.

Scope 2 (energy indirect emissions from purchased energy) account for the vast majority of our emissions; this is the energy we use to heat, ventilate, and power our offices and equipment.

We have seen a significant 6.9tCo2e reduction in reported office electricity use this year and this is despite having an increased number of staff.

This is attributed to two main factors -
 1. consolidating staff to two offices,
 2. receiving more granular energy data from the landlord - previously not made available.

As we continue to reduce our carbon emissions, what is very noticeable this year is the carbon impact of the biannual international study trip.

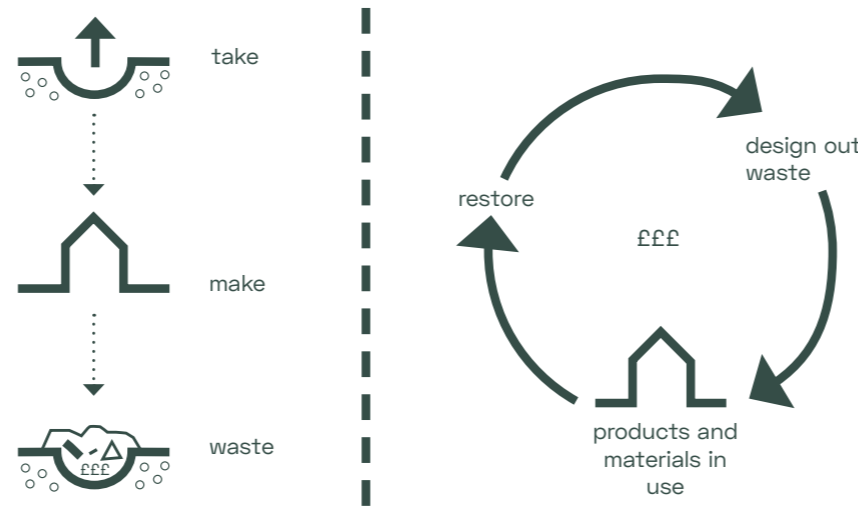
The international study trip is valuable to the practice, and in deciding to continue this, we need to quantify that value, be transparent about it, and demonstrate how a net positive outcome has been balanced.

Since our first reporting year in '20-'21, we have significantly cut our Scope 1 and 2 emissions by more than half.

We now need to focus on the next, arguably more challenging emissions, and move towards being a regenerative practice. The accuracy and Scope 3 reach of our reporting is crucial in this regard.

Circular Economy

Waste is a human concept, it's not an accident, it's largely a result of the way that things are designed.



Embedding Circular Economy into building design is key to a sustainable and regenerative construction industry.

Buildings designed to be disassembled have a residual asset value that can be assessed against return on investment. Think building as material bank.

AWW approach to CE is:

- Advocate building re-use.
- Agree CE strategy with client and design team at Stage 1.
- All key projects to have a CE method statement at RIBA Stage 2/3.
- Design for disassembly and use 'Building in Layers', communicating the disassembly strategy through the life of the project.
- Engage in industry research on CE.

AWW's Current Research Projects

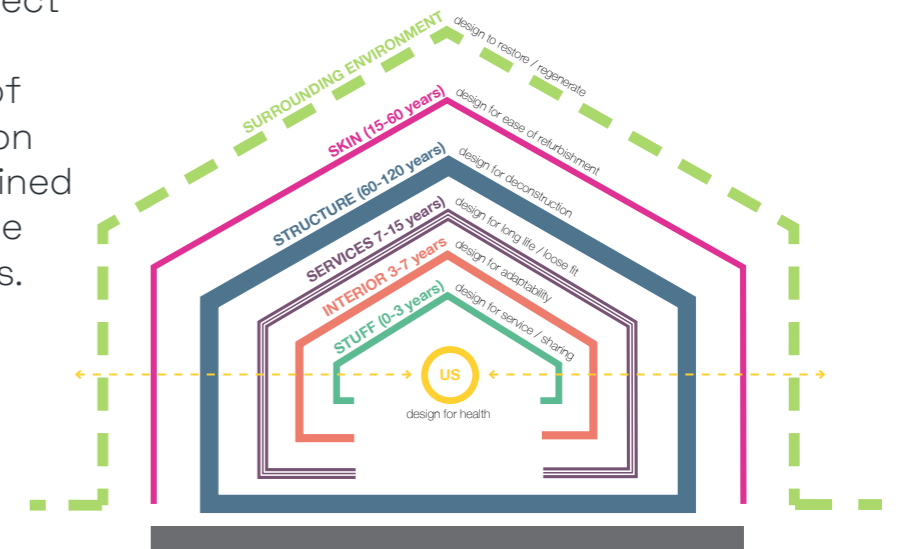
We are currently involved in two research partnerships with universities support our goal towards net zero carbon projects and applying circular economic regenerative design principles. The research findings will be integrated into our design process and actively improve and inform how we deliver projects.

Urban Flows Observatory – Research on Circularity of Existing Building Stock using BIM information: Circular Economy in Building Design

Our collaboration with University of Sheffield's Urban Flows Observatory is to form an understanding of the potential circularity of projects that have been completed in the last decade using BIM datasets. This research studies the amounts of building materials that may go to landfill, may be reused, or may be recycled. The benefit of this retrospective research work helps to inform our current design and specification decisions – to increase the circularity of the materials of our buildings.

“Carbon Artifacts: a socio-material approach to low and net zero carbon building design from concept to handover”

Our collaboration with University of Reading on their research on “Carbon Artifacts” will directly influence our design process and create a shared language between consultants, clients, and wider project teams on how the integrity of net-zero carbon aims is maintained throughout the design process.



Carbon Balance

AWW TEMWA Carbon Balance

Our target is to halve our 2020-21 greenhouse gas emissions by 2025, and pledge to offset at least 100% of our carbon balance annually.

We have now achieved that for our Scope 1 and 2 emissions, and continue to improve on reporting our Scope 3 emissions.

In 20-21, Scope 1 and 2 emissions were 51.73 tCO₂e and this year, 23-24, they are now at 21.68 tCO₂e, achieving a 58% reduction to date.

All of our remaining Scope 1 and 2 emissions have been offset through the TEMWA scheme, and we have gone further this year by offsetting our accounted Scope 3 emissions also.

Offsetting provides us with the opportunity for:

- Immediate positive environmental impact
- Immediate social benefit to a community
- Budget benchmarking for future years with the aim to become carbon negative.

Based in Bristol, TEMWA was selected as our offset partner in 2019 as it met this criteria and aligned with our values.

Almost 5 years on now, and as we move towards regenerative practice through our business actions and our design work, we will be reviewing how we can create a local, net positive environmental and social impact in addition to our project work through UK environmental restoration schemes.

AWW

is proud to be

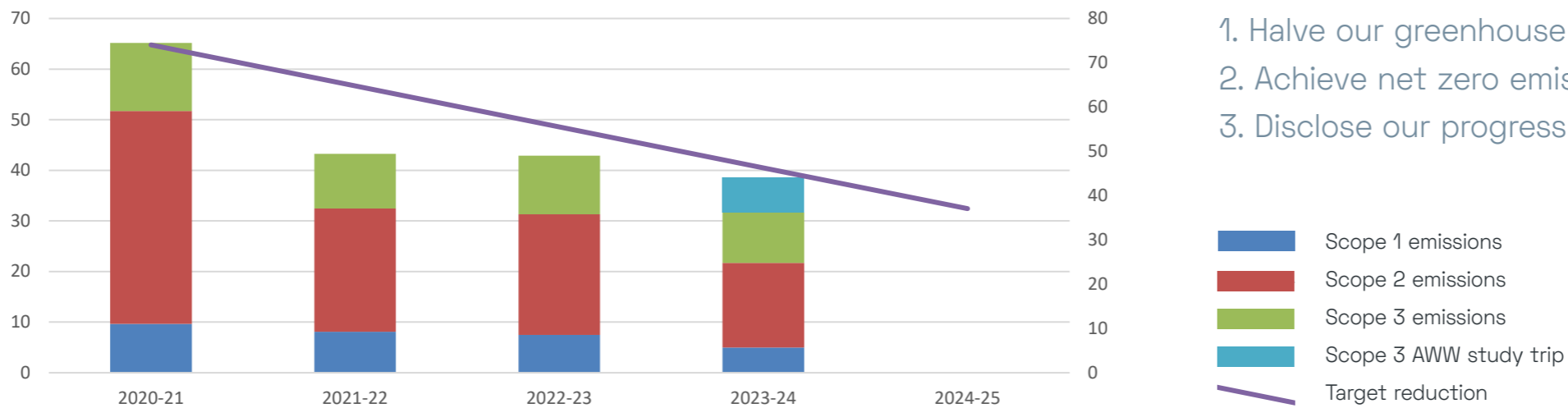


Action Plan

AWW Climate Action Plan

Area	Reason	Action 2023-24	Status	Action 2024-25	Ongoing/ Closed
Office Electricity Use	This is the highest emission at 53% of total emissions recorded.	Continue to request data from the landlord, and set up monitoring when this is forthcoming.	Accurate figures received from the landlord - reviewing data to see where further saving can be made. Good reductions made this year.	Review data through the year to determine whether any further significant savings can be made.	Ongoing
Office Electricity Source	This is the highest emission at 53% of total emissions recorded.	Can we switch to renewable? Continue to recommend to landlord to switch to renewables.	No movement from landlords. Potential to reassess London office lease next year.	Bristol: request landlord switches to renewables. London: review office lease and options for changing to renewables.	Ongoing
Pool Cars - Fuel Source	Significant contributor and AWW has control on reductions.	Predict and monitor usage throughout year.	All cars replaced now. PHEV and EV.	n/a	Closed
Scope 3	Data collection is limited	Continue to collect data for additional Scope 3 emissions	Scope 3 business travel now accounted for. Home working quantified for further review and future inclusion.	Continue to collect data for additional Scope 3 emissions, including supply chain accountability.	Ongoing
Reporting	Transparency and accuracy - both helping to reduce emissions further	Use the SME Climate Hub tools and network to improve our reporting methodology and fulfil our pledge to reduce our emissions and disclose our progress.	22-23 data uploaded onto AWW website. 23-24 data onward to be uploaded to SME Climate Hub website and AWW website going forward.	Continue to disclose our progress on a yearly basis.	Ongoing
Office use efficiency	With increased working from home, can we make better use of our offices.	Continue to review subletting/office use and related energy use.	Sub-letting accounted for now. London office option to move/renew lease to be monitored.	Continue to review subletting/office use and related energy use. KWh data is key for this.	Ongoing
Set targets	To commit to further emissions reductions	Monitor accounts regularly to help achieve targets.	Achieved XX% reduction from 2020-21. Set trajectory going forward.	Monitor accounts regularly to help achieve targets.	Ongoing
Commuting	Travel to work is not yet accounted for	Establish reporting method and include in 23-24 accounts. Continue to advocate and encourage sustainable travel.	Staff travel survey conducted, data collated and baseline established. Not yet accounted for in figures.	Include in 24-25 accounts. Continue to advocate and encourage sustainable travel.	Ongoing
Paper usage	Paper is our main material waste stream	Monitoring system now in place - no further action.	Paper and printing is reduced by approximately 75% from pre-pandemic use.	n/a	Closed

AWW Carbon Account: Actuals Vs Target - Tonnes of CO2e

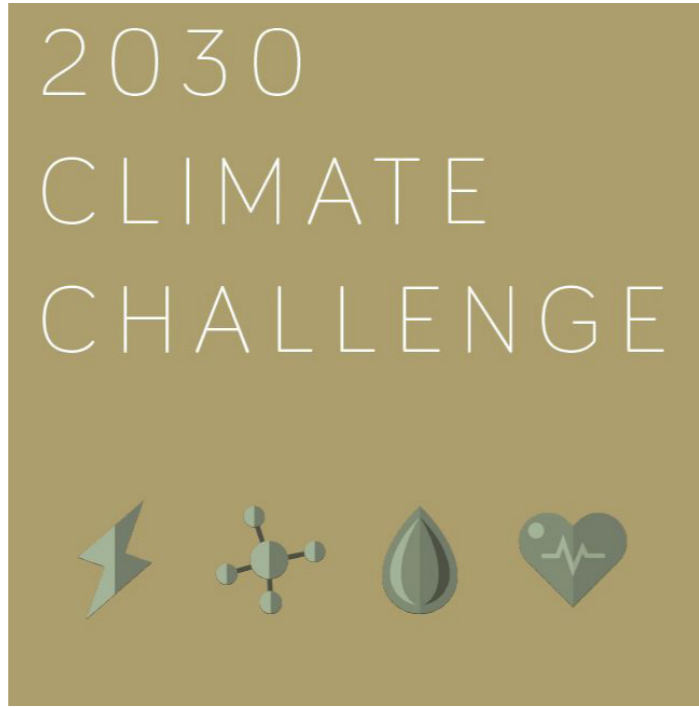


“Recognising that climate change poses a threat to the economy, nature and society-at-large, AWW commits to take action immediately in order to (as a minimum):

1. Halve our greenhouse gas emissions before 2025
2. Achieve net zero emissions before 2030
3. Disclose our progress on a yearly basis



References



RIBA 2030 Challenge
<https://www.architecture.com/about/policy/climate-action/2030-climate-challenge>



SME Climate Hub
<https://smeclimatehub.org/>



Architects Declare
<https://www.architectsdeclare.com/>



SME Climate Hub
<https://exponentialroadmap.org/>

A

W

Appendix A
Carbon Reduction Plan
October 2024

W



Carbon Reduction Plan

Supplier Name: Atkins Walters & Webster Ltd t/a AWW

Publication Date: October 2024

Commitment to achieving Net Zero

AWW has committed to halving our 2021 greenhouse gas emissions by 2025 and achieving Net Zero Emissions by 2030.

Baseline Emissions Footprint

Baseline Year: 2020/21 (05.04.2020 - 04.04.2021)

Additional Details relating to the Baseline Emissions calculations:

AWW Baseline is measured from the company's first carbon accounting period of 5.4.2020 to 4.4.2021.

The usable data available at the time was limited to AWW business energy use, and business car travel. Since the 20/21 report was published, the data pool has been increased as a consequence of the AWW Carbon Action Plan, and includes additional Scope 3 Items.

Acknowledging the later datasets being more extensive, the decision was made to continue to use the 20/21 reporting period as the baseline total tCO₂e figure from which to assess future progression.

Baseline Year Emissions:

EMISSIONS	TOTAL (tCO ₂ e)
Scope 1	9.660
Scope 2	42.069
Scope 3 (Included Sources)	13.422
Total Emissions	65.151 tCO₂e

Current Emissions Reporting

Reporting Year: 2023/24 (05.04.2023 - 04.04.2024)

EMISSIONS	TOTAL (tCO ₂ e)
Scope 1	4.96
Scope 2	16.721
Scope 3 (Included Sources)	16.89
Total Emissions	38.57 tCO₂e

Emissions Reduction Targets

The usable data available at the time was limited to AWW business energy use, and business car travel.

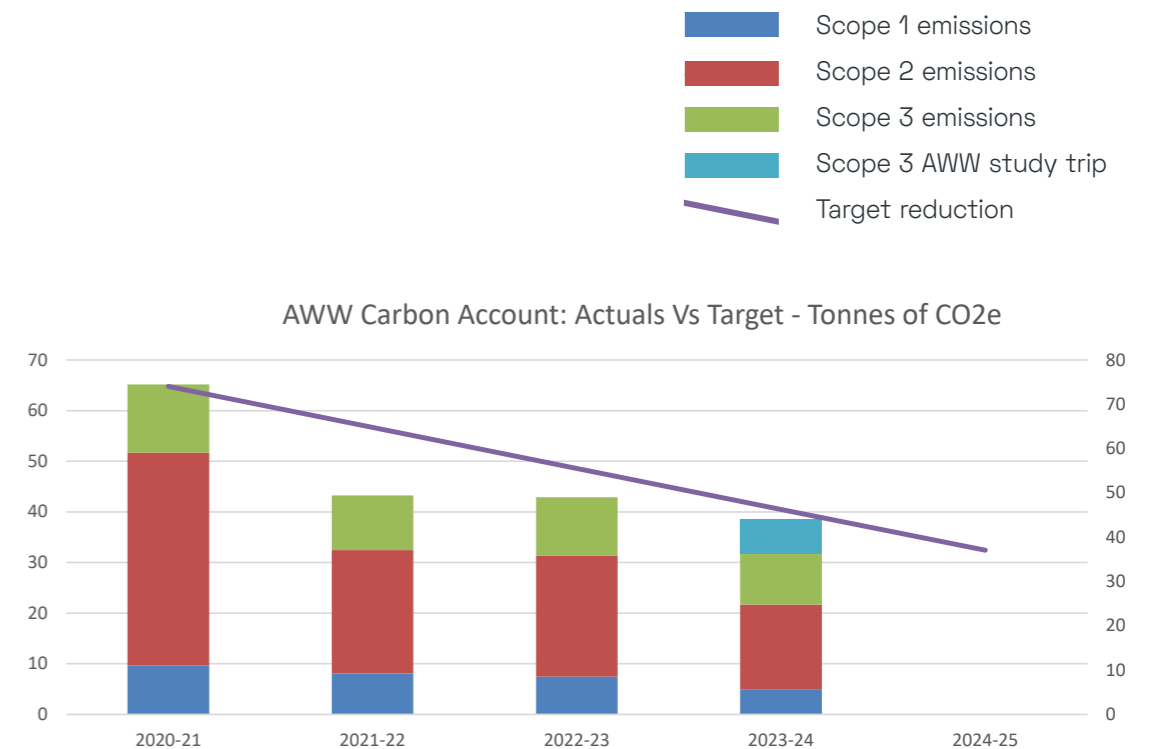
Since the 20/21 report was published, the data pool has been increased as a consequence of the AWW Carbon Action Plan, and includes additional Scope 3 Items.

In summary, since the 20/21 baseline:

Scope 1 emissions have been reduced by 49%

Scope 2 emissions have been reduced by 60%

Progress against these targets can be seen in the graph below:



Carbon Reduction Plan

Carbon Reduction Projects

Completed Carbon Reduction Initiatives

The following environmental management measures and projects have been completed or implemented since the **2020/21** baseline. The carbon emission reduction achieved by these schemes equate to **26.58 tCO₂e**, a 41% reduction against the 2020/21 baseline and the measures will be in effect when performing the contract.

Since AWW's first Carbon Action Plan in 2021, the following carbon reduction projects have been planned/progressed/completed (as indicated below):

Scope & Description	Action	Progress
Scope 1 Vehicle fleet	Reduce by 1/3 and replace diesel/petrol with electric/hybrid	Complete
Scope 2 Office premises electricity use	Reduce through floorplate planning efficiencies	Complete
Scope 2 Office premises electricity use	Reduce through better data collections and efficiency improvements to server and equipment	Progressed
Scope 2 Office premises electricity use	Changing supplier/lease to reduce carbon factor	Planned
Scope 2 Office premises electricity use	Introduce electricity monitor to each office to help control and limit use	Planned
Scope 3 Reporting	Increase accounting of Scope 3 emissions year-on-year	Progressed
General	Increase frequency to quarterly internal reporting to evaluate data and action more regularly	Complete

Declaration and Sign Off

This Carbon Reduction Plan has been completed in accordance with PPN 06/21 and associated guidance and reporting standard for Carbon Reduction Plans.

Emissions have been reported and recorded in accordance with the published reporting standard for Carbon Reduction Plans and the GHG Reporting Protocol corporate standard and uses the appropriate Government emission conversion factors for greenhouse gas company reporting.

Scope 1 and Scope 2 emissions have been reported in accordance with SECR requirements, and the required subset of Scope 3 emissions have been reported in accordance with the published reporting standard for Carbon Reduction Plans and the Corporate Value Chain (Scope 3) Standard.

This Carbon Reduction Plan has been reviewed and signed off by the Board of Directors.

Signed on behalf of the Supplier:



Tim Forster RIBA
Director, AWW
Date: 31 March 2025



info@aww-uk.com | aww-uk.com

London
106 Weston Street
London SE1 3QB

020 7160 6000

Bristol
pivot + mark
48 - 52 Baldwin Street
Bristol BS1 1QB

0117 923 2535